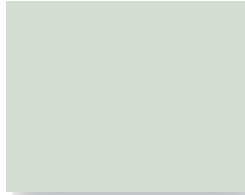


## 26 GA. Low Gloss Colors — Selection Guide



REGAL WHITE



DOVE GRAY



SLATE GRAY



ASH GRAY



DARK GRAY



COLONIAL RED



EVERGREEN



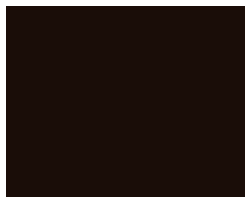
TERRA COTTA



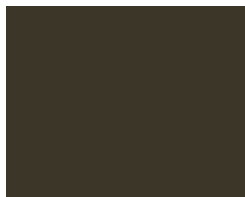
SANDSTONE



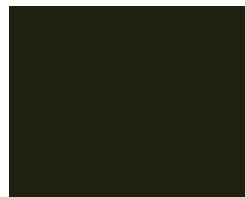
SIERRA TAN



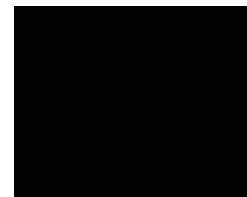
MANSARD BROWN



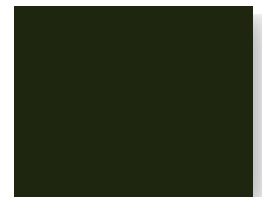
MEDIUM BRONZE



DARK BRONZE



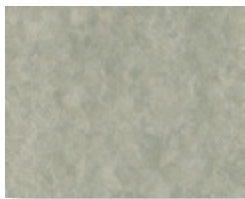
BLACK



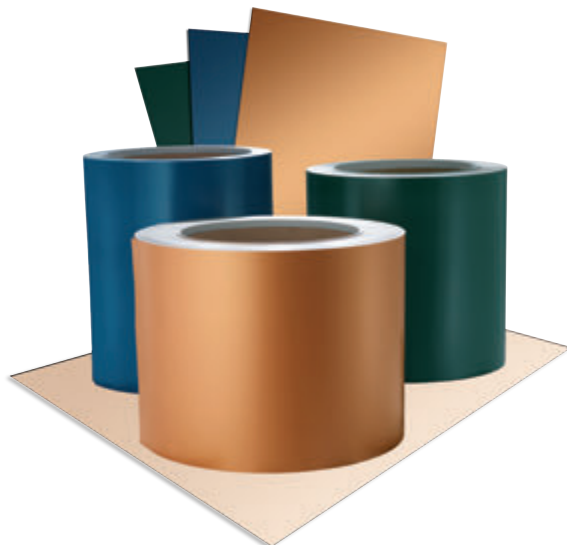
ANTIQUE



**Metallic**  
COPPER \*\*



**Non-Painted**  
ACRYLIC COATED GALVALUME<sup>®</sup>



### COOLR<sup>®</sup> Makes A Roof Cooler!

COOLR<sup>®</sup> is a family of sustainable, energy efficient roofing products comprised of 70% Kynar 500<sup>®</sup> or Hylar 5000<sup>®</sup> pre-painted metal and acrylic coated Galvalume<sup>®</sup>. COOLR<sup>®</sup> is available in a wide variety of colors, gauges, widths and substrates for low and steep slope applications.

### COOLR<sup>®</sup> Is:

- **Highly Reflective**—Available with emissivity as high as 90% and reflectivity exceeding 25%.
- **Exceptionally Durable**—Proven to last over 30 years with minimal maintenance and is offered with a non-prorated warranty for most applications. Paint colors retain 95% of their initial reflectance and emittance over time.
- **Made of Metal That Has Recycled Content & Is Recyclable**—Environmentally friendly, typically having a minimum recycled content of 25%. 100% recyclable at the end of a long, useful life.
- **Available Quickly**—Stocked in volume for fast delivery.

**Note:** For items not stocked in 27.5", customer may be subject to purchasing a 20" drop coil.

- \* Available at a slight price premium.
- \* Copper is a standard gloss product.

Colors shown are matched as accurately as possible, but may vary slightly from finished product. Please contact your representative for more information.

# Certified Laboratory Test Report Summary & Stock Availability Matrix

			ISR	EMI	3 Yr.	SRI	27.5"	40.375"	48.375"
L/S Regal White	★	L	0.66	0.87	0.66	80	●	●	●
L/S Dove Gray	★	L	0.49	0.87	-	56	●	●	●
L/S Slate Gray	★	L	0.40	0.85	0.40	43	●	●	●
L/S Ash Gray	★	L	0.49	0.87	-	56	●	●	●
L/S Dark Gray	★	L	0.32	0.86	0.33	33	●	●	●
L/S Colonial Red	★	-	0.29	0.85	0.27	28	●	●	●
L/S Evergreen	★	-	0.26	0.87	0.26	25	-	●	●
L/S Terra Cotta	★	L	0.37	0.88	0.36	40	●	●	●
L/S Sandstone	★	L	0.60	0.87	-	71	●	●	●
L/S Sierra Tan	★	L	0.29	0.86	0.30	29	●	●	●
L/S Mansard Brown	★	-	0.27	0.87	-	27	-	●	●
L/S Medium Bronze	★	L	0.30	0.86	0.32	30	●	●	●
L/S Dark Bronze	★	-	0.26	0.85	0.25	24	-	●	●
L/S Black	★	-	0.28	0.85	0.27	27	-	●	●
L/S Antique	★	-	0.28	0.85	0.27	27	-	●	●
Copper	★	L	0.49	0.86	0.47	56	-	●	●
Acrylic Coated Galvalume	-	-	0.67	0.14	0.55	56	●	●	●

	Accelerated Weathering ASTM G 23	Salt Spray ASTM B 117	Humidity ASTM D 2247	Formability ASTM G 522	Adhesion ASTM D 3359	Pencil Hardness ASTM D 3363	Specular Gloss ASTM D 523	Impact Resistance ASTM D 2794	Abrasion Resistance ASTM D 968	Tunnel Test ASTM E 84	Acid Resistance ASTM D Procedure 72 (Independent Of Substrate)
Galvalume®	2,000 Hours Chalk: #8 Color: 2AE	2,000 Hours Scribe: 7 1/16" Blisters Field: 10 No Blisters	2,000 Hours Rating: 10 No Blisters	1/8" Mandrel No Cracking No loss of adhesion	No loss of adhesion	HB Minimum	85° = 5-15	3x Metal Thickness in Inch-lb No loss of adhesion	Total Sand = 67 liters Plus or minus 10 liters	Class A Coating	20% Sulfuric Acid 18 hour - No Visible Change

## Notes:

- All of Sheffield's COOLR® metal is painted with a .20 mil primer and .70-.90 mil Top Coat of 70% Kynar 500® or Hylar 5000®. The reverse side has a .20 primer and .30-.40 backer coating.
- For low slope roofing to meet Energy Star requirements, the ISR must be ≥0.65. After 3 years, the solar reflectance must be ≥0.50.
- For steep slope roofing to meet Energy Star requirements, the ISR must be ≥0.25. After 3 years, the solar reflectance must be ≥0.15.
- For low slope roofing to meet LEED 2009 requirements, the SRI must be ≥78.
- For steep slope roofing to meet LEED 2009 requirements, the SRI must be ≥29.
- Low slope is defined as ≤2:12.
- Steep slope is defined as >2:12.
- For items not stocked in 27.5", customer may be subject to purchasing a 20" drop coil.

## Key:

- = Stocked Item
- ★ = Energy Star Compliant
- L = LEED 2009 Compliant
- ISR = Initial Solar Reflectance
- EMI = Emissivity
- SRI = Solar Reflectance Index

Represented on this chart are our most popular, high quality architectural finishes. We are proud to offer PVDF fluoropolymer coatings. These rich and vibrant colors are produced with either Kynar 500® or Hylar 5000® resins, which provides superior color retention, and allows us to offer non-prorated coating warranties for most applications.

We carry an extensive inventory of painted aluminum and Galvalume® steel, as well as, acrylic-coated Galvalume®. Custom color matching and specialty paint systems are available upon request. Your sales representative can supply you with additional information on these and our other products.

Oil canning is an aesthetic issue and is an inherent part of light gauge cold formed metal products. By using coil that has been processed properly, designing for thermal movement, following stringent specifications for installation and proper handling most oil canning can be eliminated. Oil canning is not grounds for coil/panel rejection.

Galvalume® is a registered trademark of BIEC International Inc. | Hylar 5000® is a registered trademark of Solvay Solexis, Inc. | Kynar 500® is a registered trademark belonging to Arkema Inc.