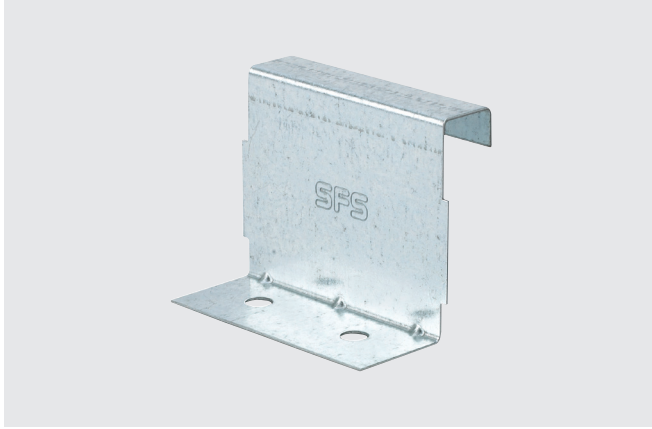


1-1/2" Fixed Engineered Panel Clip



Application

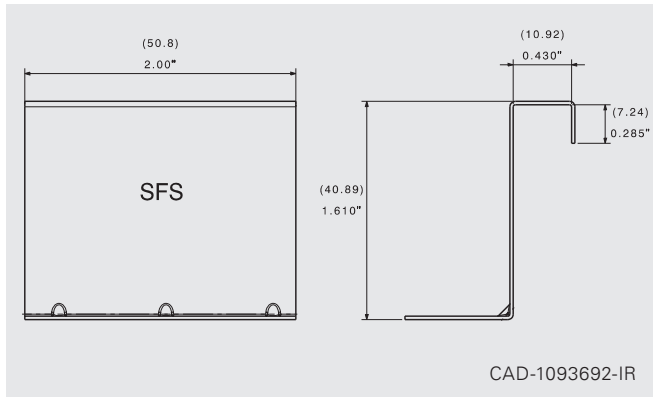
Standing seam panel clips used for attachment of mechanically seamed panel types securing a fixed connection point wherein there is minimal differential movement of the roof panel

Features and Benefits

- Manufactured from high quality, corrosion resistant steel meeting strict mechanical property requirements
- Tightly controlled manufacturing tolerances for a secure and functional fit every time
- Allows only a very limited amount of thermal movement. Always follow the standing seam panel manufacturer's details and instructions on proper use, location and performance values of fixed clips when used with their respective panel

Product Selection

Material No.	Item	Description	Carton Wt. (lbs.)	Carton Qty.
1093692	1-1/2" Fixed clip	24 ga. (0.6 mm) G-90 Galvanized	17	350
1172646	1-1/2" Fixed clip	24 ga. (0.6 mm) 304SS	17	350



Specifications

Height:	1.610" (40.89 mm)
Width:	2.00" (50.80 mm)
Holes:	2-hole

Installation and Application Considerations

- Compatible with:
 - Englert S1300
 - Knudson KR24
 - New Tech SS150
 - Ultra Seam US-150
 - Zimmerman SS1500
 - ESE 1-1/2"
 - Knudson VP24/21/Varipan
 - Quadro 1-1/2" Mechanical
 - Ultra Seam US-150C
 - Roll Former Corp. VS150
- Refer to SFS standing seam fastener offering for panel clip attachment options
- Always consult with panel manufacturer or design engineer to ensure proper clip recommendations